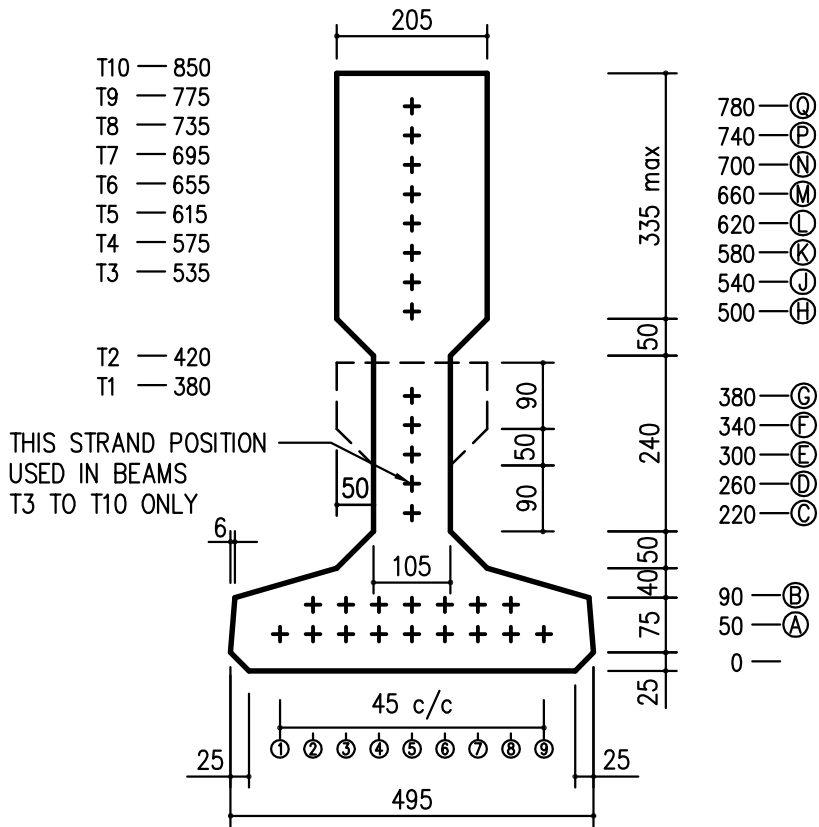


# T BEAM



## Section properties

Design self weight per unit volume has been taken as 25kN/m<sup>3</sup>

Section No	Depth (mm)	Area (mm) <sup>2</sup>	Yb (mm)	Zt (mm <sup>3</sup> x 10 <sup>6</sup> )	Zb (mm <sup>3</sup> x 10 <sup>6</sup> )	App self weight KN/m
T1	380	97385	139	5.11	8.85	2.44
T2	420	105585	159	6.69	10.98	2.64
T3	535	114160	196	9.61	16.54	2.86
T4	575	122360	220	11.92	19.22	3.06
T5	615	130560	244	14.31	21.76	3.27
T6	655	138760	267	16.73	24.32	3.47
T7	695	146960	290	19.22	26.84	3.68
T8	735	155160	312	21.72	29.45	3.88
T9	775	163360	334	24.31	32.09	4.09
T10	815	171560	356	26.96	34.48	4.29

## SPAN LOADING

## TMH7 Part 2 NA + NB LOADING

metres	5	6	7	8	9	10	11	12	13	14	15	16	17	18
T1														
T2														
T3														
T4														
T5														
T6														
T7														
T8														
T9														
T10														

Typical spacing = 500 c/c